



Pattern Collection: Accessories



Prism Wrap

Designed by Universal Yarn Design Team

SIZES

One

FINISHED MEASUREMENTS

Width: 75¼"

Length: 13"

MATERIALS

Rozetti Yarns Alpaculence (76% acrylic, 9% alpaca, 9% wool, 6% glitter; 100g/536 yds)

- 101 Obsidian (A) – 1 skein
- 103 Rainbow Pyrite (B) – 1 skein

Needles: US Size 5 (3.75 mm) 32" circular (to accommodate large number of sts) or size needed to obtain gauge

Notions: Tapestry needle, stitch markers

GAUGE

23 sts x 23 rows = 4" in Zig Zags patt

Save time, check your gauge.

Knit. Relax. Smile. Repeat!

2018 © Universal Yarn, Inc.

All rights reserved.

www.universalyarn.com

This pattern may not be reproduced for business, trade or sale.

PATTERN NOTES

We've found the gold at the end of the rainbow – it's a fabulous, colorful wrap! All you'll need along the journey is a set of needles and some gorgeous, lightweight Alpaculence. This project is downright magical!

The Prism wrap is worked flat lengthwise in one piece. Colors A and B are alternated every other row. Do not cut yarn after each color change. Instead, carry unused color up the side of the work.

STITCH GUIDE

Zig Zags

(multiple of 6 sts + 1)

Row 1 (RS): With B, * k1, m1, k1, sl 2-k1-p2sso, k1, m1; rep from * to last st, k1.

Row 2 (WS): With B, purl.

Row 3: With A, * k1, m1, k1, sl 2-k1-p2sso, k1, m1; rep from * to last st, k1.

Row 4: With A, purl.

Rep Rows 1-4 for patt.

WRAP

With A, cast on 433 sts. Purl a WS row.

Set-up Row (RS): With A k6, pm, work Row 3 of Zig Zags patt to last 6 sts, pm, k6. Patt will be repeated 70 times across row.

Set-up Row (WS): With A k6, sl m, work Row 4 of Zig Zags patt to m, sl m, k6.

Row 1: With B k6, sl m, work Row 1 of Zig Zags patt to m, sl m, k6.

Row 2: With B k6, sl m, work Row 2 of Zig Zags patt to m, sl m, k6.

Row 3: With A k6, sl m, work Row 3 of Zig Zags patt to m, sl m, k6.

Row 4: With A k6, sl m, work Row 4 of Zig Zags patt to m, sl m, k6.

Rep Rows 1-4, 16 more times, then work Rows 1 & 2, 1 more time. Loosely bind off all sts with B.

FINISHING

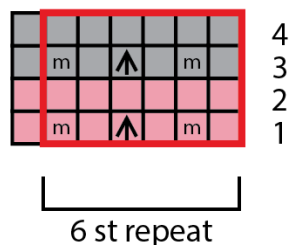
Weave in ends but do not trim. Wet or steam block, stretching to enhance lace, using pins or blocking wires along points from cast-on and

bind-off edges. Once piece is fully dry, trim ends close to work.

Abbreviations

k	knit
m	marker
m1	insert left needle from front to back under horizontal strand of yarn lying between st just worked and next st, knit or purl this st through the back loop (1 st inc'd)
p2sso	pass 2 slipped stitches over
patt	pattern
pm	place marker
rep	repeat
RS	right side
sl	slip
st(s)	stitch(es)
WS	wrong side

Zig Zags



Key

- B, knit on RS, purl on WS
- A, knit on RS, purl on WS
- make 1 stitch
- sl 2-k1-p2sso
- pattern repeat

Knit. Relax. Smile. Repeat!

2018 © Universal Yarn, Inc.

All rights reserved.

www.universalyarn.com

This pattern may not be reproduced for business, trade or sale.