



## PATTERN COLLECTION: *ACCESSORIES*



### **ZigZag Lace Shawlette**

Designed by Amy  
Gunderson

#### **FINISHED MEASUREMENTS**

**Length:** 60"

**Depth:** 18"

#### **MATERIALS**

**Universal Yarn *Classic Shades Sequins Lite*** (74% acrylic, 22% wool, 4% payette; 100g/264 yds)

- 405 Grapevine—2 balls

**Needles:** US Size 8 (5 mm)  
straight needle *or size needed to obtain gauge*

**Notions:** Yarn needle, stitch holders

#### **GAUGE**

16 sts x 32 rows = 4" in  
Garter st

**Save time, check your gauge.**

*Knit, Relax, Smile, Repeat!*

2012 © Universal Yarn, Inc.

All rights reserved.

[www.universalyarn.com](http://www.universalyarn.com)

This pattern may not be reproduced for business, trade or sale.

## STITCH GUIDE

### Zigzag Edging (16 row rep)

**Row 1 (RS):** P2, k2, yo, k2tog, p2, k1, [yo, ssk, k1] twice, m1, k2.

**Row 2 (WS):** P10, k2, p2, yo, p2tog-b, k2.

**Row 3:** P2, k2, yo, k2tog, p2, k2, [yo, ssk, k1] twice, m1, k2.

**Row 4:** P11, k2, p2, yo, p2tog-b, k2.

**Row 5:** P2, k2, yo, k2tog, p2, k3, [yo, ssk, k1] twice, m1, k2.

**Row 6:** P12, k2, p2, yo, p2tog-b, k2.

**Row 7:** P2, k2, yo, k2tog, p2, k4, [yo, ssk, k1] twice, m1, k2.

**Row 8:** P13, k2, p2, yo, p2tog-b, k2.

**Row 9:** P2, k2, yo, k2tog, p2, k4, k2tog, yo, k1, k2tog, yo, k2tog, k2.

**Row 10:** Rep row 6.

**Row 11:** P2, k2, yo, k2tog, p2, k3, k2tog, yo, k1, k2tog, yo, k2tog, k2.

**Row 12:** Rep row 4.

**Row 13:** P2, k2, yo, k2tog, p2, k2, k2tog, yo, k1, k2tog, yo, k2tog, k2.

**Row 14:** Rep row 2.

**Row 15:** P2, k2, yo, k2tog, p2, k1, k2tog, yo, k1, k2tog, yo, k2tog, k2.

**Row 16:** P9, k2, p2, yo, p2tog-b, k2.

Rep rows 1-16 for patt.

**P2tog-b:** Purl 2 sts tog through their back loops.

## PATTERN NOTES

This shawl is worked side to side. The stitch counts for the zigzag edging will increase for several rows, and then decrease, and then increase, etc. The garter stitch body is where the increases occur that affect the shaping of the shawl itself. Therefore, the garter stitches are the numbers that will be referred to in the pattern.

## SHAWL

Cast on 19 sts. K17, pm, knit to end.

### Increase section

**Next row (inc) (RS):** Sl 1 pwise wyif, kfb, sl m, work row 1 of zigzag edging—1 st inc'd in garter sect, 3 garter sts.

**Next row (WS):** Work row 2 of zigzag edging, sm, knit to end.

**Next row (inc):** Sl 1 pwise wyif, knit to 1 st bef m, kfb, sl m, work next row of zigzag edging—1 st inc'd in garter section, 4 garter sts.

**Next row:** Work next row of zigzag edging, sm, knit to end.

Rep last 2 rows until there are 52 garter sts in the garter st body section. Work even in patt with no increases to garter st sect until shawl meas 48" from cast on edge, ending on WS row 16 of zigzag edging.

### Decrease section

**Next row (dec):** Sl 1 pwise wyif, knit to 2 sts bef m, k2tog, sl m, work in patt to end—1 garter st dec'd, 51 garter sts. **Next row:**

Work in patt to m, sl m, knit to end.

Rep last 2 rows until 2 garter sts rem. Bind off all sts.

## FINISHING

Weave in ends. Wet block shawl, pinning out points to open up the lace pattern.

*Knit. Relax. Smile. Repeat!*

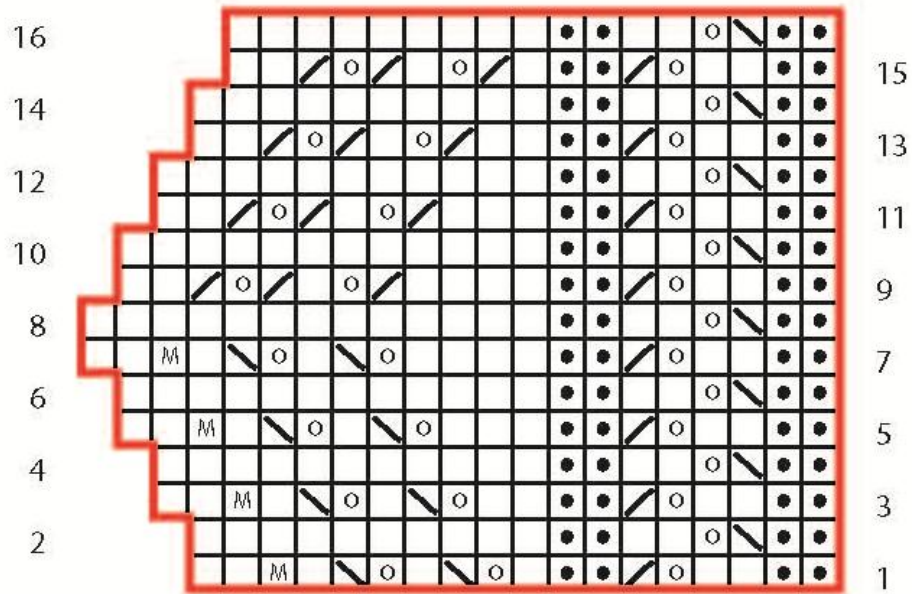
2012 © Universal Yarn, Inc.

All rights reserved.

[www.universalyarn.com](http://www.universalyarn.com)

This pattern may not be reproduced for business, trade or sale.

Zigzag Edging (16 row rep)



- k on RS, p on WS
- p on RS, k on WS
- k2tog
- ssk on RS, p2tog-b on WS
- yo
- m1
- patt rep

*Knit, Relax, Smile, Repeat!*

2012 © Universal Yarn, Inc.  
All rights reserved.  
www.universalyarn.com

This pattern may not be reproduced for business, trade or sale.