



MANOS DEL URUGUAY

## *Seesaw Wrap*

by MK Dean



## SIZE

28" wide x 89" long

## MATERIALS

Manos del Uruguay FINO (70% extrafine merino, 30% silk; approx. 490 yds/100g); 2 skeins MC and 1 skein CC. Shown in 409 Antique Lace (MC) and 420 Boudoir (CC).

US 6/4mm needles, OR SIZE TO OBTAIN GAUGE

Tapestry needle

## GAUGE

16 sts and 34 rows = 4" in Lace Pattern

## ABBREVIATIONS

K: knit

K2tog: knit 2 stitches together (1 stitch decreased)

P: purl

Ssk: slip 2 stitches, one at a time, knitwise; insert tip of left-hand needle from back to front into same 2 stitches, and knit them together (1 stitch decreased)

st(s): stitch(es)

WS: wrong side

Yo: yarnover (1 stitch increased)



INSTRUCTIONS

Using CC, cast on 98 sts.

Set-up row (WS): K2, \*p14, k2; rep from \* to end of row.

Work rows 1-44 of Chart two times. Work all RS rows as shown on chart. Work all WS rows as follows: K2, \*p14, k2; rep from \* to end of row.

Work Rows 1-21 of Chart. Change to MC and work Rows 22-44.

Work Rows 1-44 of Chart nine times.

Work Rows 1-21 of Chart. Change to CC and work Rows 22-44.

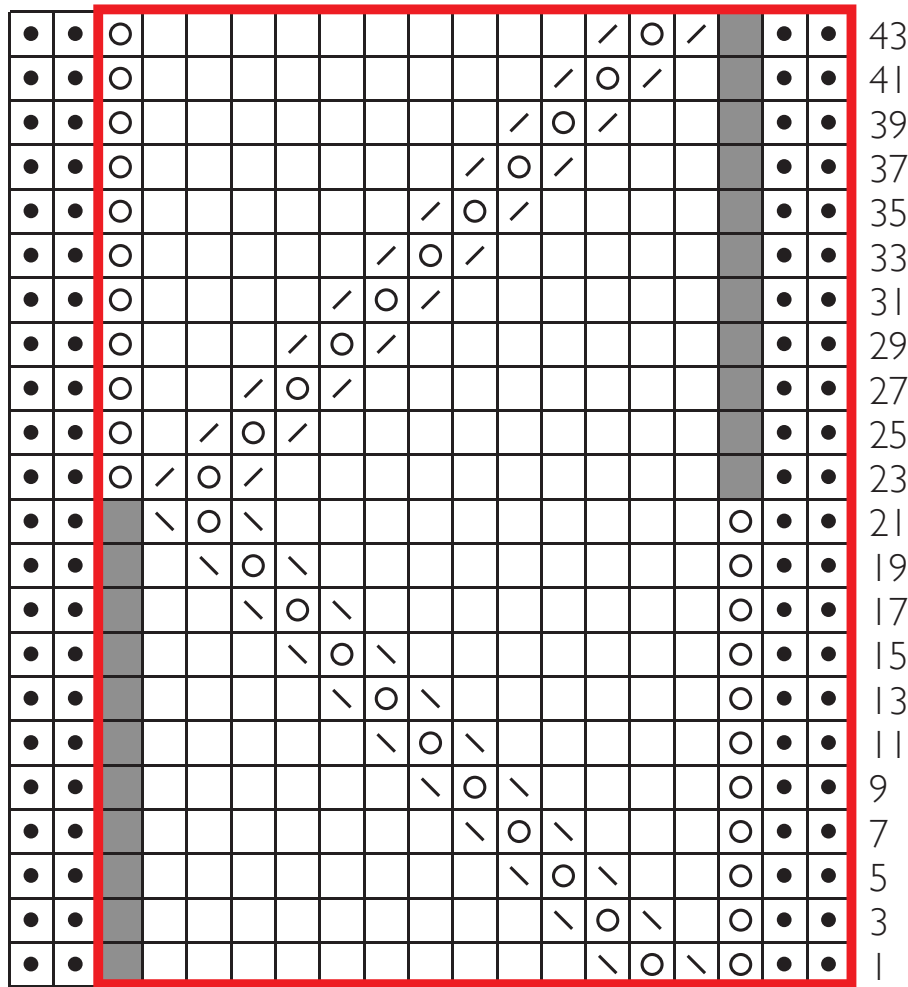
Work rows 1-44 of Chart two times.

Bind off purlwise on RS.

FINISHING

Weave in ends. Wet-block to finished measurements.

CHART



KEY

- knit
- purl
- k2tog
- ssk
- yo
- no stitch